

Welkom!

We are pleased that you are interested in our imported Netherlands products. This catalog represents our beautiful line of imported DeWit Handpainted Delftware.

When you have selected items that you would like to order, please contact our friendly customer service:

Ph: (616) 396-1475
e-mail: info@dutchvillage.com
www.dutchvillage.com
Nelis' Dutch Village
12350 James Street
Holland MI 49424

This catalog represents just one of our Dutch merchandise product lines. For all of our product lines, we constantly update our catalogs on the internet.

You can view and/or print our catalogs directly from the web at www.dutchvillage.com/store or www.bluedelft.com/catalogs.

We appreciate your interest. Please let us know if we can assist you as you consider new items for gifts or for an addition to your delftware collection.

Sincerely, Nelis' Dutch Village

DeWit Handpainted Delftware

Sometimes the term delftware is used to describe any blue and white ceramic item. However, authentic beautiful delftware is hand painted by experienced artists and tin-glazed by a process developed over centuries. The results are one-of-a-kind items treasured by knowledgeable owners.

Delftware is named for the Dutch city of Delft. In the late 16th century, prohibition closed Dutch breweries. Many of the vacated buildings were used by the fledgling, but growing delftware industry. The development of the tin-glazing techniques evolved slowly through many countries from the Orient to Italy. It was perfected by Dutch artisans.

The handpainted delftware sold by Nelis' Dutch Village is made in Holland by the DeWit Company. DeWit has a long European tradition. They excel as a high quality but affordable producer of the beautiful unique pieces shown in this catalog

All authentic DeWit delft products are of true Dutch origin and are exquisitely hand painted. They can be identified by an imprint showing the factory mark, item number, and the artist's initials. The DeWit imprint is shown here.

We also provide a "DeWit certificate of authenticity" with each piece you order.



The handpainted delft pictured in this catalog represent designs created by artists for the DeWit Company. Please keep in mind that designs will vary by artist and from each shipment received.

Nelis' Dutch Village

This catalog is available as a pdf and may be viewed or printed directly from our website at bluedelft.com. Prices can change without notice. © Nelis' Dutch Village

12350 James Street Holland MI 49424
ph: 616.396.1475 e-mail: info@dutchvillage.com

Catalog "D" - DeWit Handpainted Delftware

Last Revised: January 14 2026

Page 2 of 28

Blue and Red Tulips



011839.13
5.75" H - Ribbed Vase
\$109.95



011839.23
5.75" H - Ribbed Vase
\$109.95



011841.13
7.5" H - Ribbed Vase
\$164.95



011841.23
7.5" H - Ribbed Vase
\$164.95



011950.13
4.75" H
\$86.95



011950.23
4.75" H
\$86.95



011948.13
7" H
\$129.95



011948.23
7" H
\$129.95



010948.13
9" H
\$193.95



010948.23
9" H
\$193.95



010950.13
6.75" H
\$129.95



010950.23
6.75" H
\$129.95

Nelis' Dutch Village

This catalog is available as a pdf and may be viewed or printed directly from our website at bluedelft.com. Prices can change without notice. © Nelis' Dutch Village

12350 James Street Holland MI 49424
ph: 616.396.1475 e-mail: info@dutchvillage.com

Catalog "D" - DeWit Handpainted Delftware

Last Revised: January 14 2026

Page 3 of 28

Blue and Red Tulips



010781.13
5.5" H
\$154.95



010781.23
5.5" H
\$154.95



011490.13
Wood Rack w/3 Drawers
\$191.95



011420.13
Tea For One
\$209.95



011420.23
Tea for One
\$209.95



011490.23
Wood Rack w/3 Drawers
\$191.95



010930.13
Square Tapas Dish
\$89.95



010931.13
Double Tapas Tray
\$149.95



010930.23
Square Tapas Dish
\$89.95



010931.23
Double Tapas Tray
\$149.95

Nelis' Dutch Village

This catalog is available as a pdf and may be viewed or printed directly from our website at bluedelft.com. Prices can change without notice. © Nelis' Dutch Village

12350 James Street Holland MI 49424
ph: 616.396.1475 e-mail: info@dutchvillage.com

Catalog "D" - DeWit Handpainted Delftware

Last Revised: January 14 2026

Page 4 of 28

Blue and Red Tulips



010900.13
Cheese Board
\$67.95



010102.13
4.75"
\$64.95



010102.23
4.75"
\$64.95

Ornaments



011523.13
4.25"
\$71.95



011523.23
4.25"
\$71.95



011524.13
2.5"
\$67.95



011524.23
2.5"
\$67.95



011527.23
3"
\$89.95



011526.13
2.75"
\$66.95



011526.23
2.75"
\$66.95



011550.13
3"
\$71.95



011550.23
3"
\$71.95

Covered Jars



010280.11
12.5" H
\$191.95



010246.11
13" H
\$201.95



010246.12
13" H
\$201.95



010948.12
9.5" H
\$99.95



010086.11
6" H
\$44.95



010086.12
6" H
\$44.95



010086.21
6" H
\$49.95



010086.22
6" H
\$49.95

Nelis' Dutch Village

This catalog is available as a pdf and may be viewed or printed directly from our website at bluedelft.com. Prices can change without notice. © Nelis' Dutch Village

12350 James Street Holland MI 49424
ph: 616.396.1475 e-mail: info@dutchvillage.com

Catalog "D" - DeWit Handpainted Delftware

Last Revised: January 14 2026

Page 6 of 28

Covered Jars



010078.11
15" H
\$184.95



010078.12
15" H
\$184.95



010078.21
15" H
\$196.95



010078.22
15" H
\$196.95



010254.11
11" H
\$99.95



010254.12
11" H
\$99.95



010947.12
12.5" H
\$164.95



010284.12
5.5" H
\$102.95



010666.12
3.5" H
\$78.95

Canisters



010511.1K
5" x 5"
\$87.95



010511.1M
5" x 5"
\$87.95



010511.1S
5" x 5"
\$87.95



010511.1T
5" x 5"
\$87.95



010503.12
8.25" H
\$189.95



010503.1K
8.25" H
\$189.95



010902.1C
8" H
\$174.95



010902.1K
8" H
\$174.95

Planters



010098.11
7.75" H
\$126.95



010098.12
7.75" H
\$126.95



010202.11
5.25" H
\$94.95



010202.12
5.25" H
\$94.95



010097.11
5.5" H
\$108.95



010097.12
5.5" H
\$108.95



010186.12
5.75" H
\$71.95

Nelis' Dutch Village

This catalog is available as a pdf and may be viewed or printed directly from our website at bluedelft.com. Prices can change without notice. © Nelis' Dutch Village

12350 James Street Holland MI 49424
ph: 616.396.1475 e-mail: info@dutchvillage.com

Catalog "D" - DeWit Handpainted Delftware

Last Revised: January 14 2026

Page 8 of 28

Pitchers



010767.11
7.25" H
\$94.95



010767.21
7.25" H
\$96.95



010767.22
7.25" H
\$96.95



010091.11
7.5" H
\$69.95



010091.12
7.5" H
\$69.95



010268.11
8.25" H
\$104.95



010268.12
8.25" H
\$104.95



010242.11
6.25" H
\$67.95



010242.12
6.25" H
\$67.95



010242.21
6.25" H
\$74.95



010242.22
6.25" H
\$74.95

Pitchers



010084.11
6" H
\$68.95



010084.12
6" H
\$68.95



010702.11
6.5" H
\$74.95



010092.11
10.5" H
\$136.95



010257.11
10" H
\$154.95



010257.12
10" H
\$154.95

Vases



010345.11
5.5" H
\$64.95



010345.12
5.5" H
\$64.95



010345.21
5.5" H
\$73.95



010345.22
5.5" H
\$73.95



010050.11
8.5" H
\$126.95



010050.12
8.5" H
\$126.95



010039.11
10" H
\$174.95



010039.12
10" H
\$174.95



010054.11
6" H
\$62.95



010054.12
6" H
\$62.95



011945.11
12" H
\$156.95



011945.12
12" H
\$156.95



010095.11
12" H
\$158.95

Nelis' Dutch Village

This catalog is available as a pdf and may be viewed or printed directly from our website at bluedelft.com. Prices can change without notice. © Nelis' Dutch Village

12350 James Street Holland MI 49424
ph: 616.396.1475 e-mail: info@dutchvillage.com

Catalog "D" - DeWit Handpainted Delftware

Last Revised: January 14 2026

Page 11 of 28

Vases



010025.11
4.5" H
\$28.95



010025.12
4.5" H
\$28.95



010381.11
5.5" H
\$53.95



010381.12
5.5" H
\$53.95



010381.21
5.5" H
\$57.95



010381.22
5.5" H
\$57.95



010025.21
4.5" H
\$29.95



010025.22
4.5" H
\$29.95



010089.11
8" H
\$81.95



010089.12
8" H
\$81.95



010089.21
8" H
\$89.95



010089.22
8" H
\$89.95



010251.11
7" H
\$56.95



010251.12
7" H
\$56.95



010502.11
6.25" H
\$61.95



010502.12
6.25" H
\$61.95



010502.21
6.25" H
\$64.95



010502.22
6.25" H
\$64.95



010080.11
6" H
\$46.95



010080.12
6" H
\$46.95



010052.11
8.75" H
\$124.95



010052.12
8.75" H
\$124.95



010096.11
8" H
\$74.95



010096.12
8" H
\$74.95

Nelis' Dutch Village

This catalog is available as a pdf and may be viewed or printed directly from our website at bluedelft.com. Prices can change without notice. © Nelis' Dutch Village

12350 James Street Holland MI 49424
ph: 616.396.1475 e-mail: info@dutchvillage.com

Catalog "D" - DeWit Handpainted Delftware

Last Revised: January 14 2026

Page 12 of 28

Vases



011948.11
7" H
\$79.95



010715.11
7" H
\$86.95



010715.12
7" H
\$86.95



010715.21
7" H
\$96.95



010715.22
7" H
\$96.95



011948.12
7" H
\$79.95



010501.11
10.25" H
\$129.95



010501.12
10.25" H
\$129.95



010501.21
10.25" H
\$152.95



010501.22
10.25" H
\$152.95



011947.12
9" H
\$99.95



010200.11
11" H
\$129.95



010200.12
11" H
\$129.95



010200.21
11" H
\$154.95



010200.22
11" H
\$154.95

Nelis' Dutch Village

This catalog is available as a pdf and may be viewed or printed directly from our website at bluedelft.com. Prices can change without notice. © Nelis' Dutch Village

12350 James Street Holland MI 49424
ph: 616.396.1475 e-mail: info@dutchvillage.com

Catalog "D" - DeWit Handpainted Delftware

Last Revised: January 14 2026

Page 13 of 28

Museum Quality Unica Tea and Coffee Pieces



3.5" H

012762.41
\$219.95

4" H



012502.42
Tea Canister
3.75" H
\$96.95



3.5" H

012762.42
\$219.95

4" H



011420.41
Tea For One - 5" H
\$184.95



011420.42
Tea For One - 5" H
\$184.95



012761.41
6.25" H
\$194.95



012761.42
6.25" H
\$194.95

Nelis' Dutch Village

This catalog is available as a pdf and may be viewed or printed directly from our website at bluedelft.com. Prices can change without notice. © Nelis' Dutch Village

12350 James Street Holland MI 49424
ph: 616.396.1475 e-mail: info@dutchvillage.com

Catalog "D" - DeWit Handpainted Delftware

Last Revised: January 14 2026

Page 14 of 28

Teapots



010760.11
10" H
\$154.95



010751.11
7.5" H
\$99.95



010751.12
7.5" H
\$99.95



010760.12
10" H
\$154.95



010771.11
5.5" H
\$129.95



010771.12
5.5" H
\$129.95



010751.22
7.5" H
\$109.95



010761.11
6.25" H
\$139.95



010761.12
6.25" H
\$139.95



010761.21
6.25" H
\$151.95



010761.22
6.25" H
\$151.95

Sugar and Creamer Pieces



010752.11
4" H
\$80.95



010752.12
4" H
\$80.95



010762.11
5" H
\$154.95



010762.12
5" H
\$154.95



010762.21
5" H
\$177.95



010762.22
5" H
\$177.95



010569.11
4" H
\$46.95



010569.12
4" H
\$46.95



010569.21
4" H
\$49.95



010569.22
4" H
\$49.95

Nelis' Dutch Village

This catalog is available as a pdf and may be viewed or printed directly from our website at bluedelft.com. Prices can change without notice. © Nelis' Dutch Village

12350 James Street Holland MI 49424
ph: 616.396.1475 e-mail: info@dutchvillage.com

Catalog "D" - DeWit Handpainted Delftware

Last Revised: January 14 2026

Page 16 of 28

Mugs and Cups



010777.11
4" H
\$44.95



010777.12
4" H
\$44.95



015246
5" H
Dutch Way of Life Stein
\$39.95



011777.14
4" H
\$39.95



010778.11
4" H
\$53.95



010778.12
4" H
\$53.95



011777.15
4" H
\$39.95



010779.11
3.5" H
\$44.95



010757.11
3" H
\$78.95



011779.14
3" H
\$34.95



010757.12
3" H
\$78.95



011779.15
3" H
\$34.95

Plates and Dishes



010406.11
6.25" W
\$79.95



010406.12
6.25" W
\$79.95



010327.11
10.5" W
\$132.95



010923.11
5.5" W
\$56.95



010923.12
5.5" W
\$56.95



010318.11
7" W
\$68.95



010318.12
7" W
\$68.95



010327.12
10.5" W
\$132.95



010322.11
8.75" W
\$92.95



010322.12
8.75" W
\$92.95



012909.42
7" Octagonal Dish
\$149.95

Nelis' Dutch Village

This catalog is available as a pdf and may be viewed or printed directly from our website at bluedelft.com. Prices can change without notice. © Nelis' Dutch Village

12350 James Street Holland MI 49424
ph: 616.396.1475 e-mail: info@dutchvillage.com

Catalog "D" - DeWit Handpainted Delftware

Last Revised: January 14 2026

Page 18 of 28

Plates and Appliques



010404.11
12" Diameter - 2" Deep Plate
\$186.95



010404.12
12" Diameter - 2" Deep Plate
\$186.95



010404.21
12" Diameter - 2" Deep Plate
\$215.95



010404.22
12" Diameter - 2" Deep Plate
\$215.95



012046.41
Unica Applique
10.5" H x 8.75" W
\$382.95

012046.42
Unica Applique
10.5" H x 8.75" W
\$382.95



***Designs are handpainted
and may vary from those
pictured.***

Nelis' Dutch Village

This catalog is available as a pdf and may be viewed or printed directly from our website at bluedelft.com. Prices can change without notice. © Nelis' Dutch Village

12350 James Street Holland MI 49424
ph: 616.396.1475 e-mail: info@dutchvillage.com

Catalog "D" - DeWit Handpainted Delftware

Last Revised: January 14 2026

Page 19 of 28



010775.12
10" Plate Clock
\$134.95



010515.11
Butter Dish - 4" D
\$89.95



010515.12
Butter Dish - 4" D
\$89.95



010549.11
Napkin Holder - 4.25" H
\$62.95



010549.12
Napkin Holder - 4.25" H
\$62.95



010562.11
Salt & Pepper - 3.25" H
\$66.95



010562.12
Salt & Pepper - 3.25" H
\$66.95



010951.22
8" H
\$64.95



010954.12
5.5" H
\$34.95



010957.12
4.25" H
\$32.95



010568.11 Spoon Rack
7.75" L x 3.75" H
\$47.95



010568.12 Spoon Rack
7.75" L x 3.75" H
\$47.95



010006.11
4" H
\$27.95



010006.12
4" H
\$27.95



010169.11
5" H
\$89.95



010169.12
5" H
\$89.95



010005.11
5" H
\$34.95



010005.12
5" H
\$34.95



010567.21
8.25" L
\$46.95



010567.11
8.25" L
\$42.95



010005.21
5" H
\$36.95



010005.22
5" H
\$36.95



010567.22
8.25" L
\$46.95



010567.12
8.25" L
\$42.95

Nelis' Dutch Village

This catalog is available as a pdf and may be viewed or printed directly from our website at bluedelft.com. Prices can change without notice. © Nelis' Dutch Village

12350 James Street Holland MI 49424
ph: 616.396.1475 e-mail: info@dutchvillage.com

Catalog "D" - DeWit Handpainted Delftware

Last Revised: January 14 2026

Page 21 of 28



010102.11
4.75" L
\$36.95



010102.12
4.75" L
\$36.95



010102.21
4.75" L
\$39.95



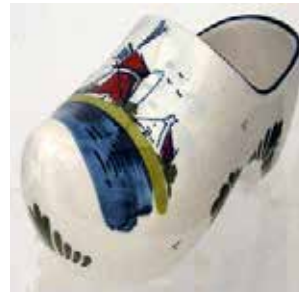
010105.11
8.5" L
\$52.95



010104.11
6.75" L
\$46.95



010104.12
6.75" L
\$46.95



010104.21
6.75" L
\$51.95



010105.21
8.5" L
\$53.95



010563.12
Dancing Trio - 3" H
\$79.95



010558.12
Dutch Couple - 4" H
\$54.95



010565.13
Kissing Kids - 6.75" H
\$99.95



010566.13
Kissing Kids - 4.25" H
\$87.95



011481.12
VW Van
\$149.95



010565.12
Kissing Kids - 6.75" H
\$79.95



010566.12
Kissing Kids - 4.25" H
\$72.95

Nelis' Dutch Village

This catalog is available as a pdf and may be viewed or printed directly from our website at bluedelft.com. Prices can change without notice. © Nelis' Dutch Village

12350 James Street Holland MI 49424
ph: 616.396.1475 e-mail: info@dutchvillage.com

Catalog "D" - DeWit Handpainted Delftware

Last Revised: January 14 2026

Page 22 of 28



010660.12
9" H
\$74.95



010673.12
4" H
\$42.95



010680.12
6.25" H
\$76.95



010799.12
4" H
\$49.95



010683.12
6.25" H
\$67.95



011712.11
3" H
\$49.95

**egg stand sold separately



011712.12
3" H
\$49.95



010792.12
Dachshund Dog
\$134.95



010699.12
6" L x 5" H
\$109.95



010698.12
9" L x 7.5" H
\$189.95



011710
5/8" H
\$7.95



010712.12
Penguin
4.25" H
\$54.95



010714.12
Penguins,
asst'd- 2.5"
\$28.95



010903.12
7.5" H
\$49.95



010903.22
7.5" H
\$54.95



011450.12
Christmas Tree w/mice
15" H
\$209.95



010732.12
Giraffe
3.75" H
\$69.95



010583.12
Elephant
3" H
\$66.95



010690.12
Kitten - Asst'd
\$59.95



010733.42
Mouse
\$28.95



010740.12
Butterfly
\$74.95



010740.22
Butterfly
\$99.95

Nelis' Dutch Village

This catalog is available as a pdf and may be viewed or printed directly from our website at bluedelft.com. Prices can change without notice. © Nelis' Dutch Village

12350 James Street Holland MI 49424
ph: 616.396.1475 e-mail: info@dutchvillage.com

Catalog "D" - DeWit Handpainted Delftware

Last Revised: January 14 2026

Page 23 of 28



010855.12
4" H
\$29.95



010853.12
8" H
\$69.95



019856.11
8.5" H - Musical
\$79.95



019857.11
7.5" H - Musical
\$76.95



010481.11
11" H
\$91.95



010481.21
11" H
\$96.95



010481.22
11" H
\$96.95



010851.12
10" H
\$75.95



010483.12
9.5" H
\$69.95

Handpainted Ornaments



011524.11
2.5" D
\$46.95



011524.12
2.5" D
\$46.95



011526.12
2.75" D
\$46.95



011527.11
3" D
\$69.95



011527.12
3" D
\$69.95



010004.11
2.5" H
\$34.95



010004.12
2.5" H
\$34.95



011523.11
4.25" H
\$52.95



011523.12
4.25" H
\$52.95



Front



Back

011523.HM
4.25" H
\$49.95



010004.21
2.5" H
\$39.95



010004.22
2.5" H
\$39.95



011542.12
4" L
\$27.95



Front

011490.11
Tree Topper
6" H
\$51.95



Back



011530.12
Asst'd Flat Ornaments
\$12.95



Ornament Stand

011530
8" H
\$6.50

Nelis' Dutch Village

This catalog is available as a pdf and may be viewed or printed directly from our website at bluedelft.com. Prices can change without notice. © Nelis' Dutch Village

12350 James Street Holland MI 49424
ph: 616.396.1475 e-mail: info@dutchvillage.com

Catalog "D" - DeWit Handpainted Delftware

Last Revised: January 14 2026

Page 25 of 28

Handpainted Christmas Figurines



011437.42
10.5" H
\$249.95



011488.12
6.25" H
\$59.95



011488.22
6.25" H
\$74.95



011488.42
6.25" H
\$116.95



Back



Front

011487.42
12" H
\$223.95



011489.12
Tree Topper
9.5" H
\$124.95



011486.42
16" H
\$459.95



011436.42
9" H
\$103.95



011544.12
4" H (asst)
\$54.95



011443.12
Joseph & Mary
\$249.95



011605.12
Nativity in Tree
9" H
\$139.95

Nelis' Dutch Village

This catalog is available as a pdf and may be viewed or printed directly from our website at bluedelft.com. Prices can change without notice. © Nelis' Dutch Village

12350 James Street Holland MI 49424
ph: 616.396.1475 e-mail: info@dutchvillage.com

Catalog "D" - DeWit Handpainted Delftware

Last Revised: January 14 2026

Page 26 of 28

Handpainted Nativity Pieces

011546.12

Full 16 Piece Nativity Set

\$814.95



011465.12
Standing Camel
7" H
\$94.95



011466.12
Cow
3.5" H
\$54.95



011467.12
Sheep
3" H
\$44.95



011468.12
Goat
2.5" H
\$46.95



011469.12
Sitting Camel
4.25" H
\$77.95



011470.12
Donkey
4" H
\$62.95



011471.12
Kneeling Angel
4" H
\$39.95



011472.12
Baby Jesus
3.25" W
\$49.95



011473.12
Wiseman #1
6.25" H
\$54.95



011474.12
Shepherd
6.25" H
\$59.95



011475.12
Wiseman #2
6.25" H
\$54.95



011476.12
Wiseman #3
4.75" H
\$56.95



011477.12
Joseph
6.25" H
\$56.95



011478.12
Mary
4.25" H
\$54.95



011479.12
Shepherd
6" H
\$49.95



011480.12
Child Shepherd
4.25" H
\$49.95

Nelis' Dutch Village

This catalog is available as a pdf and may be viewed or printed directly from our website at bluedelft.com. Prices can change without notice. © Nelis' Dutch Village

12350 James Street Holland MI 49424
ph: 616.396.1475 e-mail: info@dutchvillage.com

Catalog "D" - DeWit Handpainted Delftware

Last Revised: January 14 2026

Page 27 of 28

Unique Pieces



012880.32
18" L
\$609.95

Nelis' Dutch Village

This catalog is available as a pdf and may be viewed or printed directly from our website at bluedelft.com. Prices can change without notice. © Nelis' Dutch Village

12350 James Street Holland MI 49424
ph: 616.396.1475 e-mail: info@dutchvillage.com

Catalog "D" - DeWit Handpainted Delftware

Last Revised: January 14 2026

Page 28 of 28