



2019  
Retail

12350 James St.  
Holland MI 49424  
phone: 616.396.1475  
info@dutchvillage.com

## CANALHOUSES



Nelis' Dutch Village

# Welkom!

We are pleased that you are interested in our imported Netherlands products.

This catalog represents just one product line of our imported Dutch merchandise. We invite you to take advantage of the multiple catalogs available for downloading or printing on our website at wholesale. [dutchvillage.com](http://dutchvillage.com).

Thanks again for your interest. We hope to establish a pleasant long term business relationship with you.

Sincerely,

Joseph Nelis

**Nelis' Dutch Village**

12350 James Street, Holland MI 49424

Ph: 616.396.1475 fax: 866.880.8439

e-mail: [info@dutchvillage.com](mailto:info@dutchvillage.com) [www.dutchvillage.com](http://www.dutchvillage.com)

This retail **Canalhouse Catalog** is available for viewing or printing, directly from the web as a pdf at [bluedelft.com](http://bluedelft.com) or at [shopping.dutchvillage.com](http://shopping.dutchvillage.com). Prices are subject to change without notice. © Nelis' Dutch Village

Catalog "C" 2018 Revision Oct 31 2018

Page 2 of 6

# NEW FOR 2019

## Redesigned Canalhouse Sets - Each series includes 8 houses

Small Canalhouses are approximately 3" tall - each house is \$10.95  
Large Canalhouses are approximately 5 1/2" tall - each house is \$16.95



290801 (#1)  
Rembrandt House



290802 (#2)  
Flower & Plant Shop



290803 (#3)  
Souvenir Shop



290804 (#4)  
Chocolatier



290805 (#5)  
Anne Frank House



290806 (#6)  
Klompen Shop



290807 (#7)  
Bordello



290808 (#8)  
Coffee Shop

*The Bordello and Coffee Shop Canalhouses are part of the new series. Buyers should be aware that they are "authentic" to today's Amsterdam and their "R-rated" decoration may not be acceptable to all customers.*



290701 (#1)  
Rembrandt House



290702 (#2)  
Flower & Plant Shop



290703 (#3)  
Souvenir Shop



290704 (#4)  
Chocolatier



290705 (#5)  
Anne Frank House



290706 (#6)  
Klompen Shop



290707 (#7)  
Bordello



290708 (#8)  
Coffee Shop

## Nelis' Dutch Village

12350 James Street, Holland MI 49424

Ph: 616.396.1475 fax: 866.880.8439

e-mail: info@dutchvillage.com www.dutchvillage.com

This retail **Canalhouse Catalog** is available for viewing or printing, directly from the web as a pdf at [bluedelft.com](http://bluedelft.com) or at [shopping.dutchvillage.com](http://shopping.dutchvillage.com). Prices are subject to change without notice. © Nelis' Dutch Village

Catalog "C" 2018 Revision Oct 31 2018

Page 3 of 6



## Salt & Pepper Sets



6530557  
4" tall  
\$9.95



271167  
3.5" tall  
\$11.95

## Oil, Vinegar, Salt & Pepper Set with Tray



039856  
9" long x 4.5" tall  
\$25.95

## Canisters

**\$17.95 each**  
**Set of 4 for \$69.95**



**Nelis' Dutch Village**

12350 James Street, Holland MI 49424

Ph: 616.396.1475 fax: 866.880.8439

e-mail: [info@dutchvillage.com](mailto:info@dutchvillage.com) [www.dutchvillage.com](http://www.dutchvillage.com)

This retail **Canalhouse Catalog** is available for viewing or printing, directly from the web as a pdf at [bluedelft.com](http://bluedelft.com) or at [shopping.dutchvillage.com](http://shopping.dutchvillage.com). Prices are subject to change without notice. © Nelis' Dutch Village

Catalog "C" 2018 Revision Oct 31 2018

Page 4 of 6

# Mini Canalhouses

approximately 4.5" high.

\$7.95 each house.



290100  
#1 Point Gable

290101  
#2 Neck Gable

290102  
#3 Bell Gable

290103  
#4 Bell Gable

290104  
#5 Stair Gable

290105  
#6 Stair Gable

## Nightlight



Includes Light and Bulb  
6431587  
5.25" tall  
\$14.95

## Ornaments



6431552  
2.75"  
\$8.95



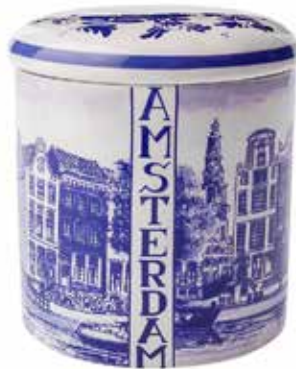
6839318  
2.5"  
\$5.95



297971  
2.5"  
\$7.95  
(plastic)



4630111  
Canalhouse Frame  
(3x5)  
\$5.00



291612  
Canalhouse Canister  
4.75" Tall  
\$18.95

## Shot Glass



291063  
4" tall  
\$5.95



010779.11  
Canalhouse Mug  
3.5" Tall  
\$27.95

# Nelis' Dutch Village

12350 James Street, Holland MI 49424

Ph: 616.396.1475 fax: 866.880.8439

e-mail: info@dutchvillage.com www.dutchvillage.com

This retail **Canalhouse Catalog** is available for viewing or printing, directly from the web as a pdf at [bluedelft.com](http://bluedelft.com) or at [shopping.dutchvillage.com](http://shopping.dutchvillage.com). Prices are subject to change without notice. © Nelis' Dutch Village

Catalog "C" 2018 Revision Oct 31 2018

Page 5 of 6



# CLOSE OUT PAGE - Limited Availability

Small Canalhouses are approximately 5.5" tall - each house is \$17.95

Large Canalhouses are approximately 7" tall - each house is \$19.95



290121 (#1)  
Puntgevel  
(Point Gable)



290126 (#6)  
Halsgevel  
(Neck Gable)



290131 (#11)  
Skinniest House in  
Amsterdam



290134 (#14)  
Warehouse



290137 (#17)  
Fantasie  
(Fantasy Gable)



290129 (#9)  
Bordello



290130 (#10)  
Tattoo Parlor



290333 (#13)  
Clothier



290335 (#15)  
Bordello

## Nelis' Dutch Village

12350 James Street, Holland MI 49424

Ph: 616.396.1475 fax: 866.880.8439

e-mail: [info@dutchvillage.com](mailto:info@dutchvillage.com) [www.dutchvillage.com](http://www.dutchvillage.com)

This retail **Canalhouse Catalog** is available for viewing or printing, directly from the web as a pdf at [bluedelft.com](http://bluedelft.com) or at [shopping.dutchvillage.com](http://shopping.dutchvillage.com). Prices are subject to change without notice. © Nelis' Dutch Village

Catalog "C" 2018 Revision Oct 31 2018

Page 6 of 6